

Suspended luminaire/light run feed luminaire - Single micro louvre with 80° lens - direct/indirect distribution

Housing of sheet steel in a delicate square design; black, die-cast aluminium end faces; Housing colour traffic white RAL 9016; Light distribution direct/indirect distribution by means of Single micro louvre with 80° lens, with single micro louvre, black, homogeneous indirect share with opal diffuser made of PMMA. Suitable for VDU workstations,  $65^\circ < 100 \text{ cd/m}^2$  omnidirectional glare reduction in accordance with current DIN-EN 12464-1 standard, UGR (4H/8H) 15.7. Luminaire with Tunable White continuously adjustable colour temperatures, for implementing human-centric daylight simulations (HCL). Electrical connection via integrated white connection cable 5x0.75mm<sup>2</sup>, length 1900mm, wired ready for connection. Additional control components may be offered depending on requirements. Complete height-adjustable suspension set with canopy is included in delivery. Luminaire in tunable white technology for Human Centric Lighting. Suspension set with a canopy and integrated light control available separately as accessories. Luminaire with tunable white continuously adjustable colour temperatures, for implementing Human Centric Lighting HCL daylight simulations. Black housing and white single micro louvre possible on request.

**CHARACTERISTICS**

Order number	60615026670
EAN number	4020863419555
Commodity code	94051190
Certification mark	IP 20, Protection class I, $\gamma$ 65° < 100 cd/m <sup>2</sup> , F, Indoor, CE
Impact resistance (IK rating)	IK02
Ambient temperatur	ta 25°C
Special properties	Ready for IoT
Warranty period	5 years
State funding programs	BEG - Federal funding for efficient buildings (valid only for Germany)

**ELECTRICAL ENGINEERING**

Controller	Electronic driver DALI device type 8 (1 pcs.)
Wiring	5x0.75mm <sup>2</sup>
System output	38W
Mains voltage	230V/50Hz
Circuit breakers (inrush current)	13 pieces/B10, 22 pieces/B16, 21 pieces/C10, 36 pieces/C16
Energy efficiency class/light source	D

**LIGHTING TECHNOLOGY**

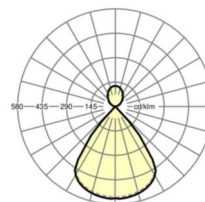
Placement	LED, Colour rendering/Light colour CRI ≥ 80 / 2700K-6500K continuously adjustable
Colour tolerance (MacAdam)	3SDCM
Photobiological safety (Luminaire)	RG1
Nominal luminous flux	4780lm
LED service life	50000h L80/B10 (Tq 25°C)
Luminaire luminous efficiency	126lm/W
UGR lat./long.	15.7 / 15.6

**MECHANICS**

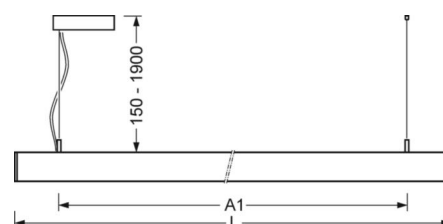
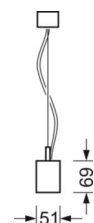
Housing colour	traffic white RAL 9016
Dimensions (LxWxH/DxH)	1411mm x 51mm x 69mm
Weight (net)	3.8kg
Type of installation	Pendant individual mounting, Pendant light strip mounting

**DEEP-LINK**

<https://www.regiolum.de/en/article/60615026670>



Reference	LED 4800lm 827-865
ηLB	100 %
Φ ↓/↑	73 % / 27 %
UGR lat./long.	15.7 / 15.6



## Dimensions

---

<b>L</b>	1411 mm	Length
<b>B</b>	51 mm	Width
<b>H</b>	69 mm	Height
<b>A1</b>	1200 mm	Mounting distance single mounting
<b>P min</b>	150 mm	Minimum suspension length
<b>P max</b>	1900 mm	Maximum suspension length

---